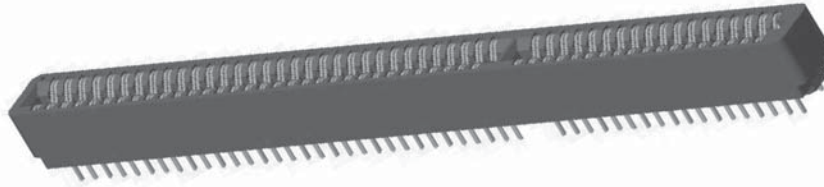


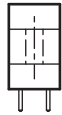


**.100" [2.54 mm] Contact Centers, .610" [15.49 mm] Insulator Height,
[ISA] Dip Solder/Wire Wrap/Right Angle**

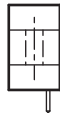


Sullins Edgecards

READOUT



DUAL (D)



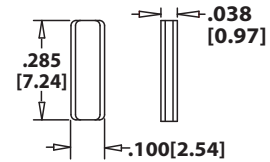
HALF LOADED (H)

SPECIFICATIONS

- Accommodates .062" ± .008" [1.57 ± .20] PC board
- PBT or PA9T insulator
- Molded-in key available
- 3 amp current rating per contact
- 30 milli ohm maximum at rated current

POLARIZING KEY

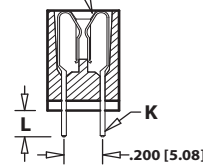
PLC-K1



**KEY IN BETWEEN CONTACTS
(ORDER SEPARATELY)**

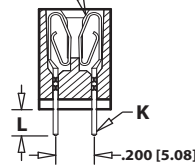
TERMINATION TYPE

HAIRPIN BELLOWS

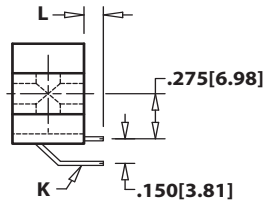


HAIRPIN BELLOWS
(CS,CM,CW,CT)

LOOP BELLOWS



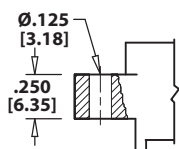
LOOP BELLOWS
(TK,RS,RM)



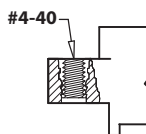
RIGHT ANGLE, DIP SOLDER
(CA,CB,CC,TA,TB,TM)
-S605 MODIFICATION

HAIRPIN BELLOWS	LOOP	TERMINATION TYPE	POST CROSS SECTION K	POST LENGTH L .025 [.64]	FITS MIN. HOLE SIZE
CM	TK, CK	DIP SOLDER	.026 [.66] ROUND	.190 [4.83]	.030 [0.76]
	RS	DIP SOLDER	.025 [.64] SQUARE	.190 [4.83]	.040 [1.02]
CA	RM	WIRE WRAP	.025 [.64] SQUARE	.560 [14.20]	.040 [1.02]
CB	TA	RIGHT ANGLE	.025 [.64] SQUARE	.100 [2.54]	.043 [1.09]
CC	TB	RIGHT ANGLE	.025 [.64] SQUARE	.180 [4.57]	.043 [1.09]
CW	TM	RIGHT ANGLE	.025 [.64] SQUARE	.250 [6.35]	.043 [1.09]
CT		DIP SOLDER	.015 X .025 [.38 X .64]	.125 [3.18]	.035 [0.76]
CS		DIP SOLDER	.015 X .025 [.38 X .64]	.170 [4.32]	.035 [0.76]
		DIP SOLDER	.025 [.64] SQUARE	.160 [4.06]	.040 [1.02]

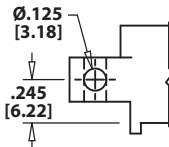
MOUNTING STYLE



CLEARANCE HOLE (H)



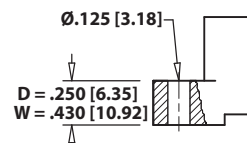
THREADED INSERT (I)



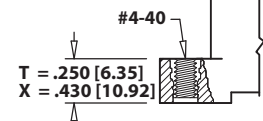
SIDE MOUNTING (S)



NO MOUNTING EARS (N)



FLUSH MOUNTING (D, W)



FLUSH MOUNTING WITH THREADED INSERT (T, X)



.100" [2.54 mm] Contact Centers, .610" [15.49 mm] Insulator Height, [ISA] Dip Solder/Wire Wrap/Right Angle

Sullins Edgecards

PART NUMBER CODING

E B C 49 D CW N - S420

MATERIALS (Insulator/Contact)
 E = PBT/Phosphor Bronze (Standard)
 G = PA9T/Phosphor Bronze
 H = PBT/Beryllium Copper
 J = PA9T/Beryllium Copper
 (Consult Factory for Other Materials)

CONTACT FINISH - RoHS Compliant
 All platings are Lead Free and have .000050" Nickel underplate

	Contact Surface	Termination
B =	.000010" Gold	.000100" Pure Tin, Matte
C =	.000030" Gold	.000100" Pure Tin, Matte
G =	.000010" Gold	.000005" Gold
Y =	.000030" Gold	.000005" Gold

	Contact Surface	Overall Plating
S =	.000010" Gold	.000010" Gold
M =	.000030" Gold	.000010" Gold
E =	.000100" Pure Tin, Matte	.000100" Pure Tin, Matte

CONTACT CENTERS
 C = .100" [2.54mm]

NUMBER OF CONTACT POSITIONS
 18, 31 or 49 (31/18)

READOUT (Opposite page)
 D = Dual
 H = Half Loaded

MODIFICATION CODE (Consult Factory)
ISA WITH RETENTION FEATURE
 -S524 = 18 Positions
 -S524 = 31 Positions
 -S518 = 49 Positions (31/18)
ISA WITHOUT RETENTION FEATURE
 -S371 = 18 Positions
 -S371 = 31 Positions
 -S420 = 49 Positions (31/18) Dip Solder or Wire Wrap
 -S605 = 49 Positions (31/18) Right Angle

MOUNTING STYLE (Opposite Page)
 H = Clearance Holes
 I = Threaded Inserts
 S = Side Mounting
 N = No Mounting
 D,W = Flush Mounting
 T,X = Flush Mounting With Threaded Inserts

TERMINATION TYPE (Opposite Page)
Hairpin Bellows *
 CS = .025" [0.64mm] Square Dip Solder
 CM = .025" [0.64mm] Square Wire Wrap
 CA, CB, CC = .025" [0.64mm] Square Right Angle
 CW, CT = .015" [0.38mm] x .025" [0.64mm] Dip Solder
Loop Bellows
 RS = .025" [0.64mm] Square Dip Solder
 TK = .026" [0.66mm] Round Dip Solder
 RM = .025" [0.64mm] Square Wire Wrap
 TA, TB, TM = .025" [0.64mm] Square Right Angle
 * Available in B or C Plating and Phosphor Bronze only
 Consult Factory for Cantilever Terminations

DIMENSIONS

Dimensions in [] are in millimeters, all others are in inches.

