

Medium LCC Sockets



- Lidded style socket provides consistent normal force on LCC contact pads for maximum electrical reliability
- Compliant metal W-spring, supported by plastic lid, accommodates wide range of package thicknesses
- Compliant leads accommodate package planarity variations
- Repairable - leads, lid and latch can be replaced

Date Issued: February 19, 2001

TS-0433-07
Sheet 1 of 3

27

Physical

Insulation

Material: Glass Filled Polyphenylene-Sulfide PPS
Flammability: UL 94V-0
Color: Black

Marking: 3M Logo & Part Number Identifier

Contact

Material: Beryllium Copper
Plating: 30 μ " (0.76 μ m) Gold over 50 μ " (1.3 μ m) Nickel

Electrical

Current Rating: 1 Amp
Insulation Resistance: $>1 \times 10^{12} \Omega$ at 500 Vdc
Withstanding Voltage: 1000 Vrms at Sea Level

Environmental

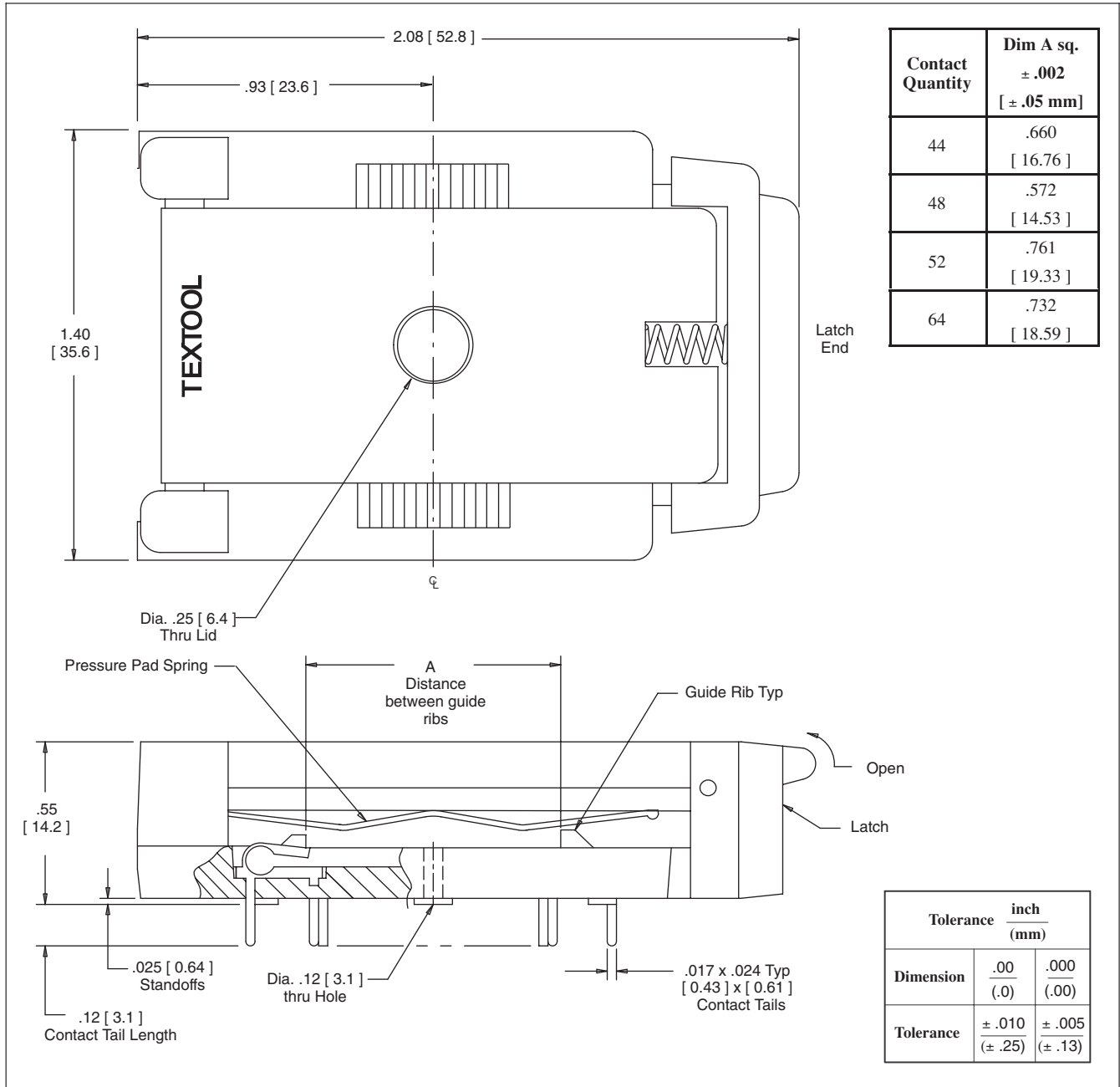
Operating Temperature Rating: - 55° C to + 150° C

3M Electronic Handling and Protection Division

6801 River Place Blvd.
Austin, TX 78726-9000

For technical, sales or ordering information call **800-328-0411**
or visit our website: <http://www.3M.com/ehpd>

Medium LCC Sockets



Ordering Information

Part Number	Contact Quantity	Pitch	Package Size (LxW)	Package Thickness
244-4961-00-1102	44	.050 [1.27]	.650 x .650 [16.51] [16.51]	.050 - .090 [1.27] [2.29]
248-5085-00-1102	48	.040 [1.01]	.560 x .560 [14.22] [14.22]	
252-4962-00-1102	52	.050 [1.27]	.750 x .750 [19.05] [19.05]	
264-5086-00-1102	64	.040 [1.01]	.720 x .720 [18.28] [18.28]	

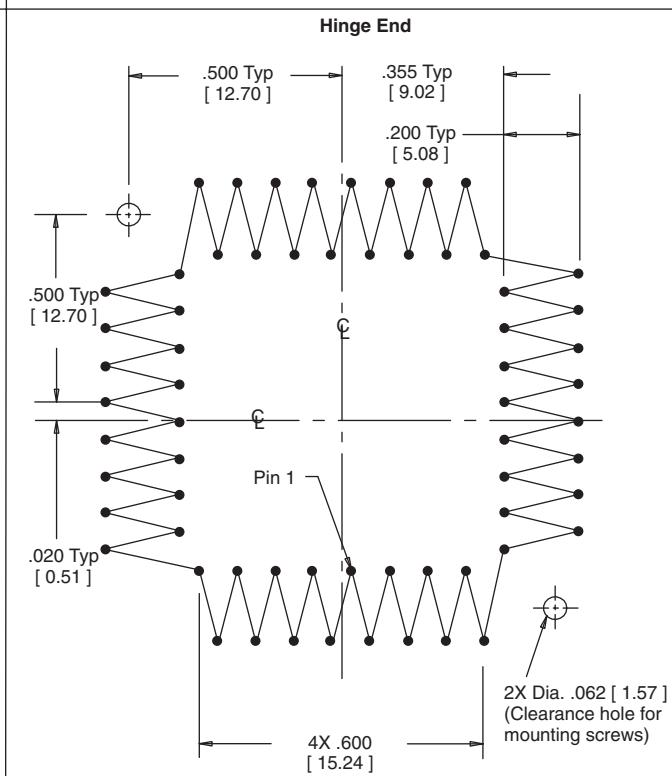
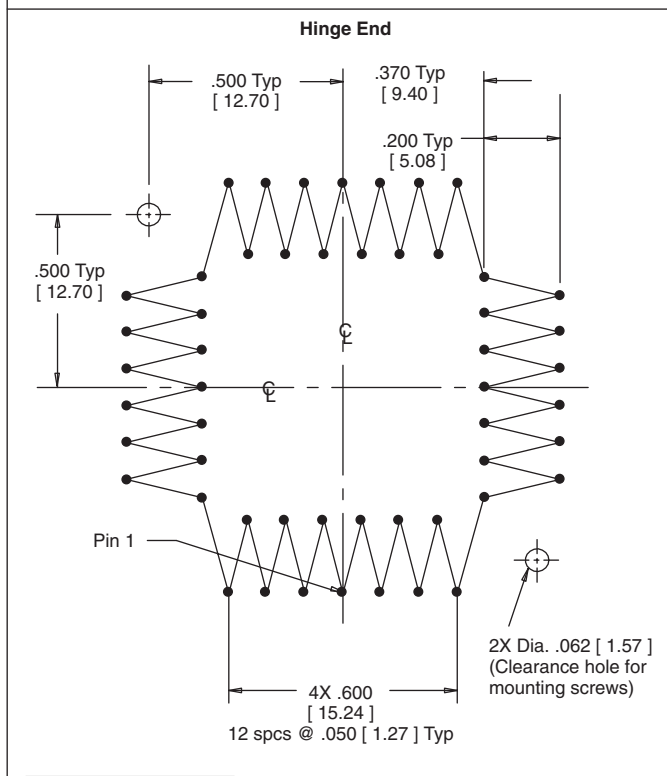
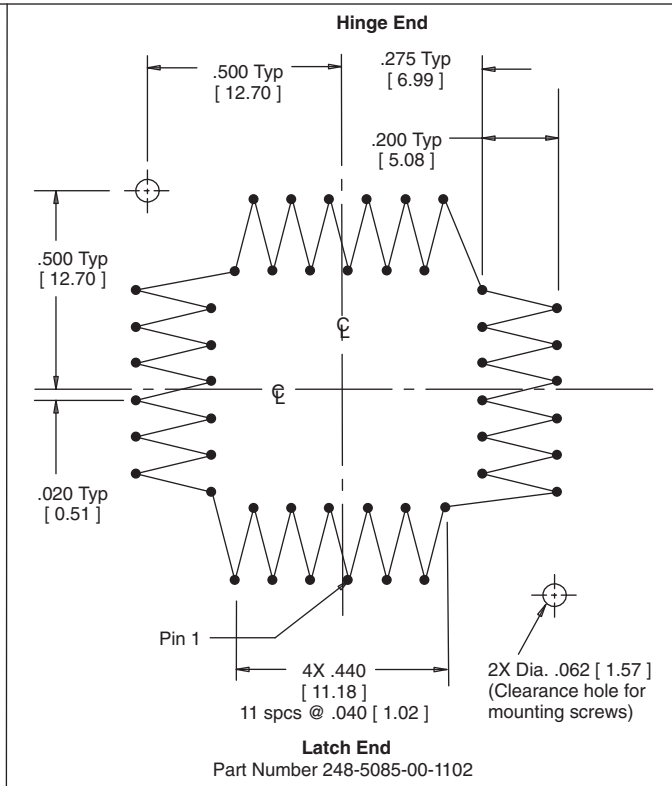
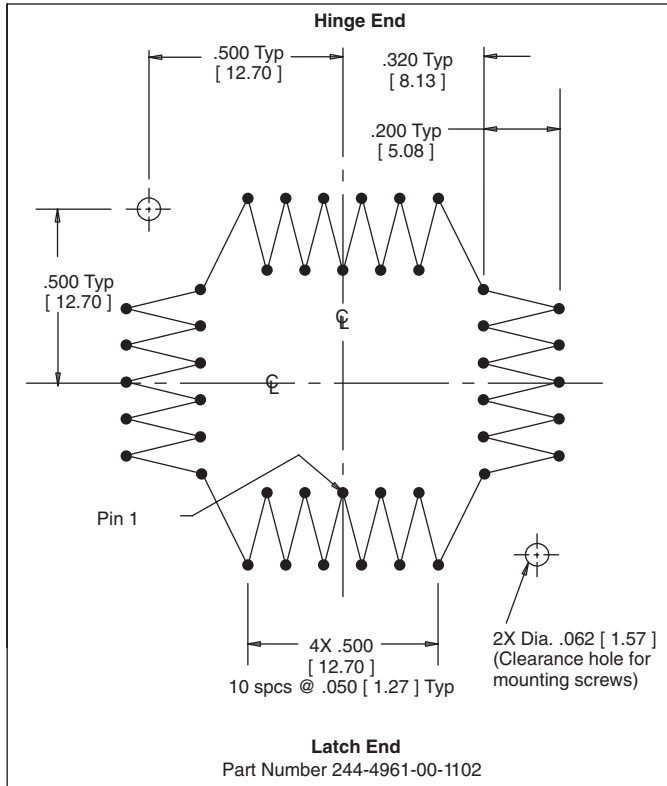
TS-0433-07
Sheet 2 of 3

3M Electronic Handling and Protection Division

6801 River Place Blvd.
Austin, TX 78726-9000

For technical, sales or ordering information call **800-328-0411**
or visit our website: <http://www.3M.com/ehpd>

Medium LCC Sockets



Tolerance	inch (mm)	
Dimension	.00 (.0)	.000 (.00)
Tolerance	± .010 (± .25)	± .005 (± .13)